

May 2016, Safe Surfing, Part 2 Browsers, Search Engines, and Toolbars

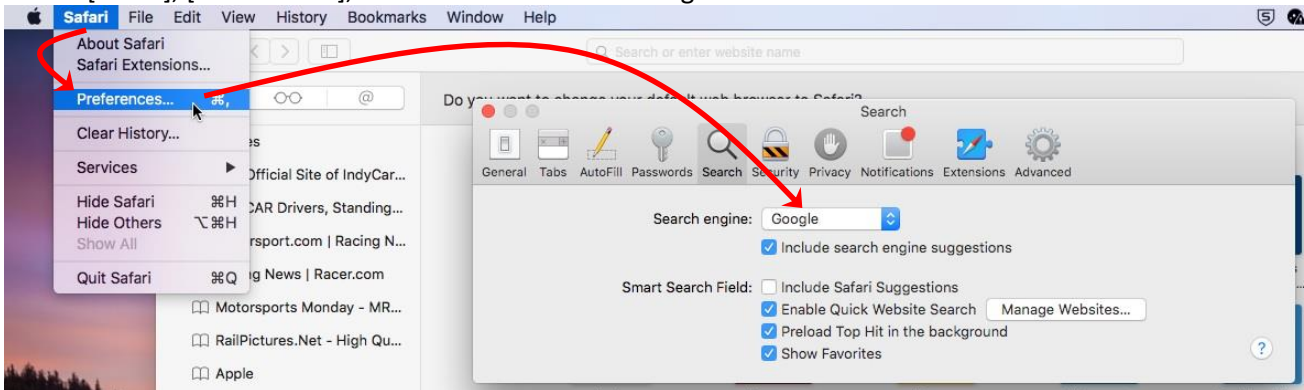
Last issue, I started this series of newsletters in reverse order, and visited the topic of toolbars (get rid of them). Now we take up the topic of insuring your browser's default search engine is correctly set. It's not hard to check, and if it's not what you thought, easy to re-set it to what you prefer.

Before we get into the details, a brief history of Search Engines: The only ones that matter anymore are Google, Bing and Yahoo. Those three have 98% of the world market. The rest of the entire world's search engines (and there are a lot of them) have the remaining 2%. Of the big three, Google has 68%, Bing has 20% and Yahoo has about 10%. I fully expect Yahoo to disappear entirely now that the company appears to be in its final death spiral. So that leaves Google and Bing as your choices. Either is OK. Yahoo will probably be gobbled up by Bing, but you never know.

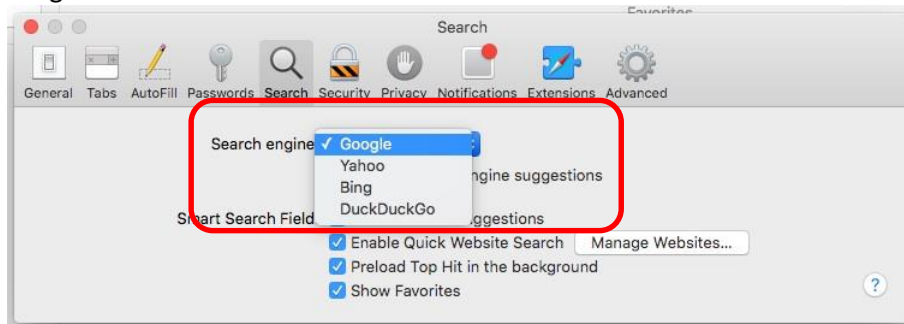
You may have been wondering what I mean when I say "set your browsers default search engine". So a short explanation about that is also necessary. Remember in the bad old days of the internet when you mistyped a web address? The results could be either a blank page, error message, or something very... unexpected. Modern browsers all have a self-correcting mechanism that prevent misspellings and therefore offer safer browsing. That mechanism is supplied by setting a default search engine. When you type an address in the address bar, your default search engine screens what you type against a library of legitimate web addresses and provides an auto-correct feature. It also can offer suggestions as to what you are searching for as well. So let's set your default search engine...

Apple / Safari:

Step 1: Click [Safari], [Preferences], then click on the Search Engine selector box



Step 2: Select a Search Engine:

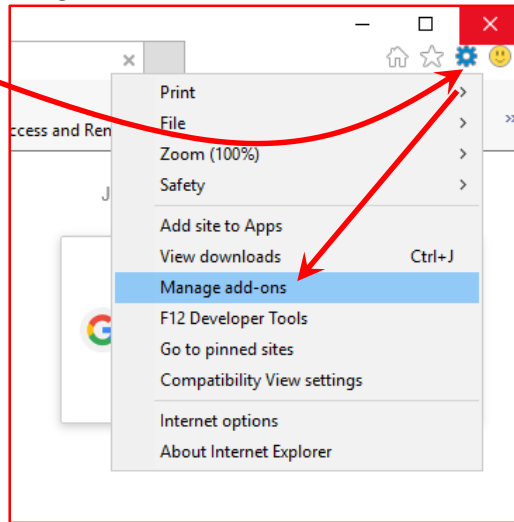


DONE!

Medical Office Systems, LLC

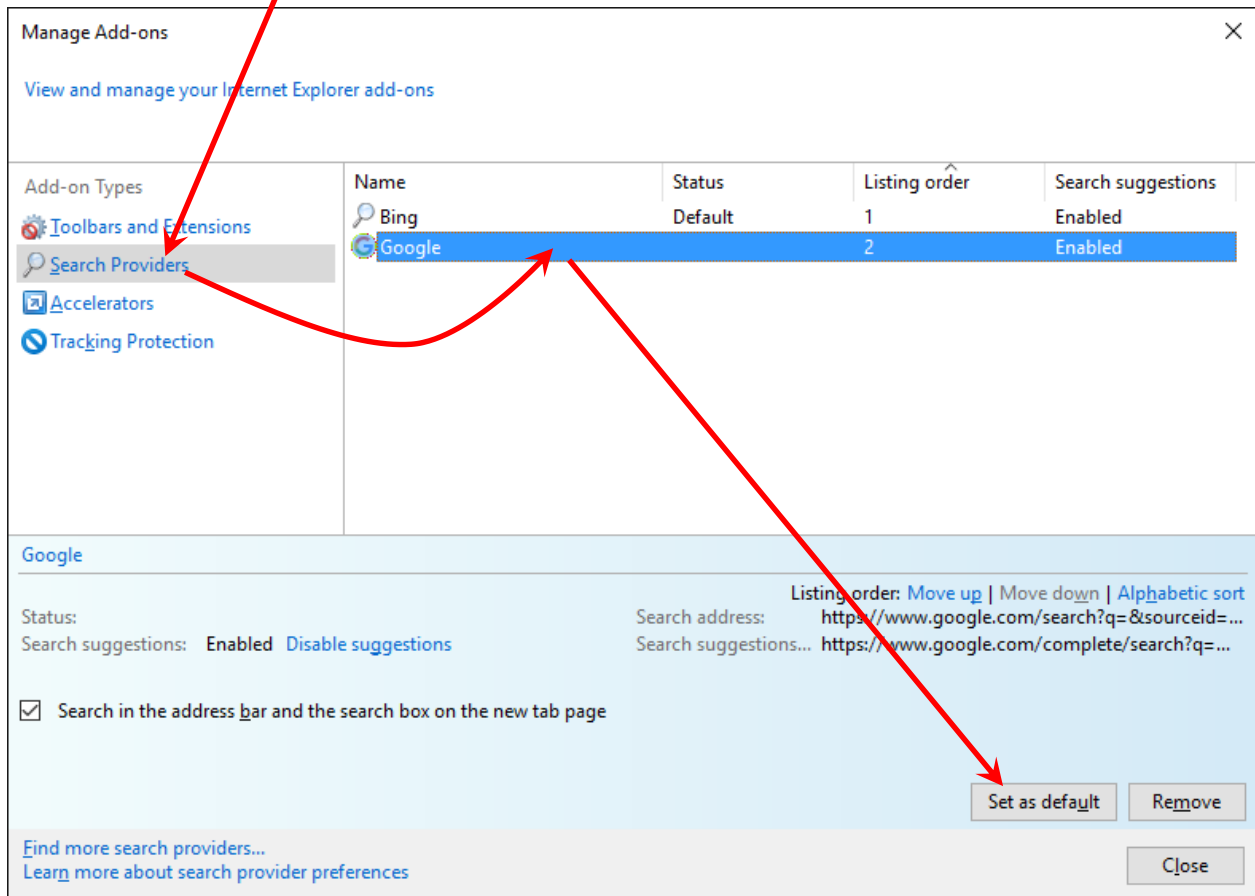
Windows / Internet Explorer:

Step 1: Click the "Gear" icon, select "Manage Add-ons"



Step 2: Select Search Provider:

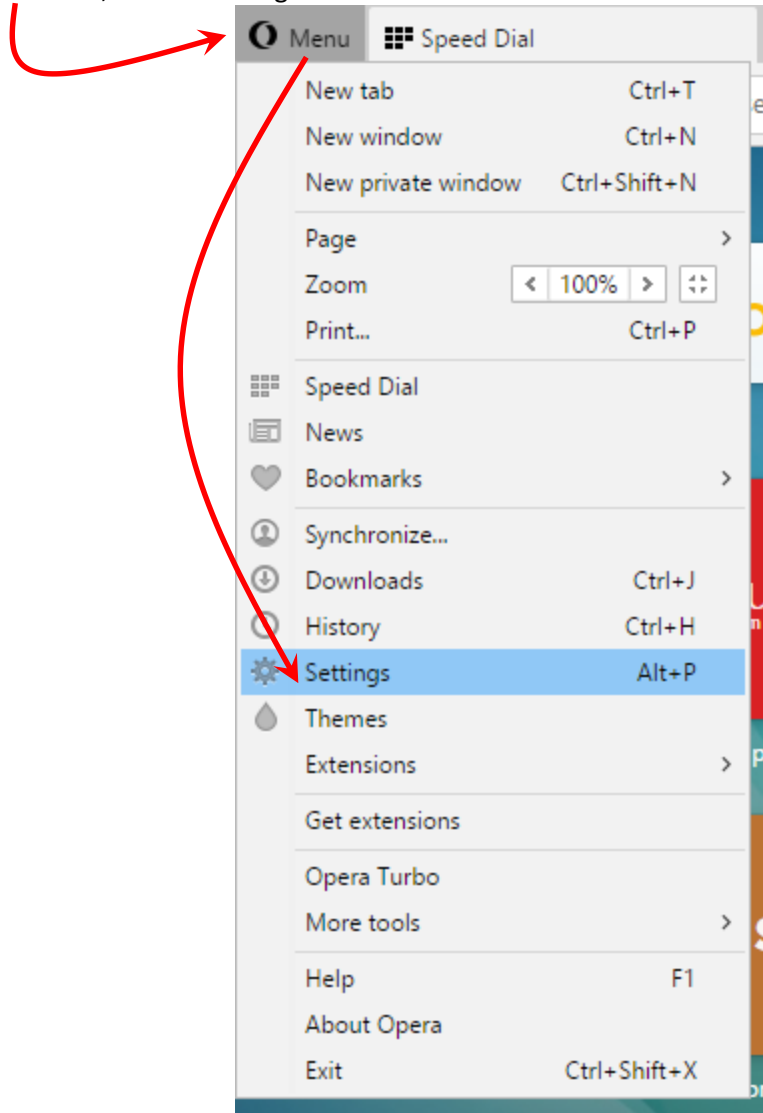
In this example, my Search Provider Default is Bing. I single-click on Google, then click [Set as Default], then [Close] DONE!



Medical Office Systems, LLC

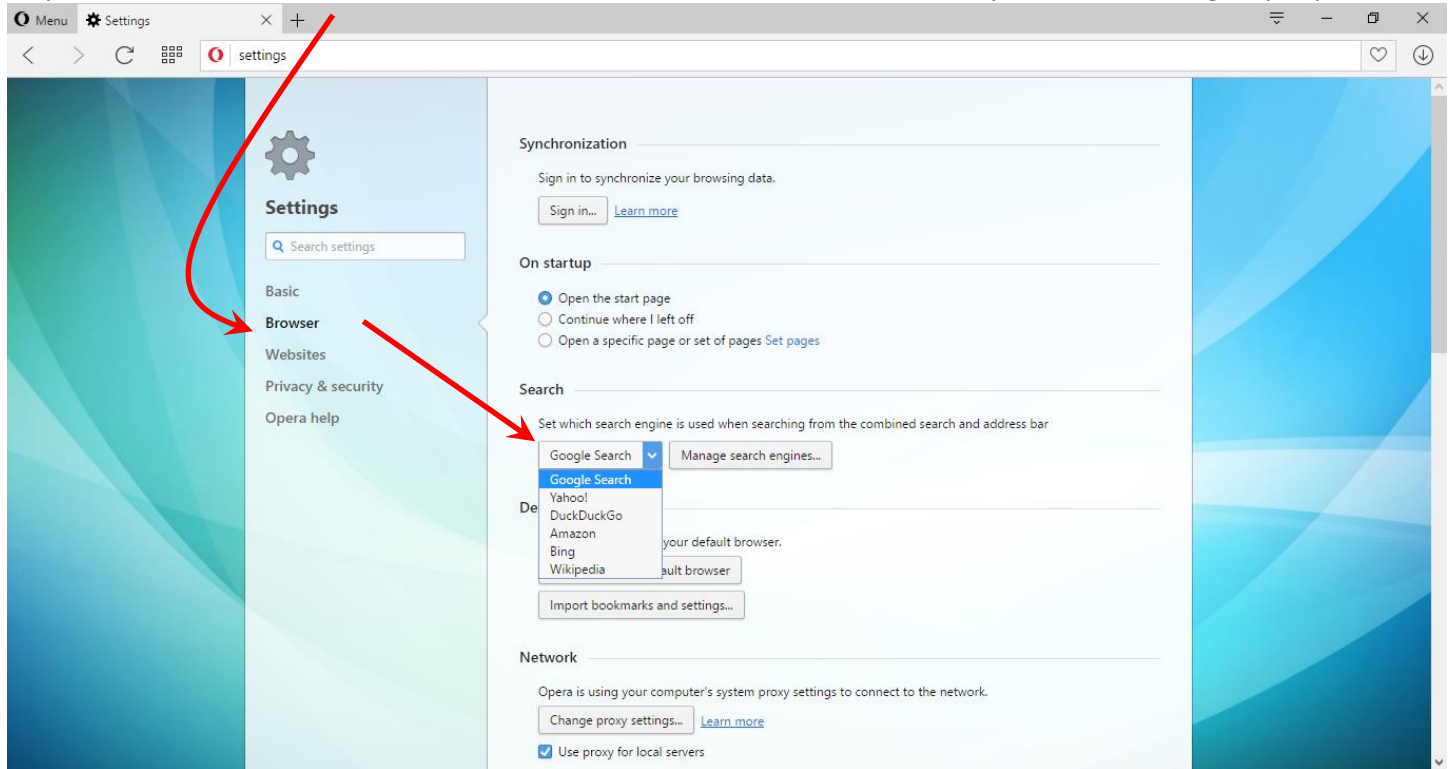
Windows or Mac: Opera Corp. / Opera Browser

Step 1: Click the "O" Menu, select "Settings"



Medical Office Systems, LLC

Step 2: Click "Browser" in the left menu... under "Search", click the selector box to pick the search engine you prefer



DONE!

I hope these guides have helped you select the proper search engine. If your browser is not represented here, or if it has a search engine default that is not in these guidelines, please contact me for further details.

-JB